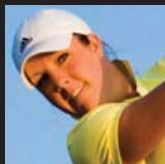


# 2009 ProAm Information

**Pro-Am & Tournament Dates**  
 Community Pro Am: Mon. July 13.  
 Sponsor Pro-Ams: Wed. July 15 and  
 Thurs. July 16  
 Tournament Play Begins Friday,  
 July 17 and ends Sunday, July 19, 2009

There is Simply



No Better Way



To Cement



A Business Relationship,



Celebrate a Friendship,



or Recognize Someone



Than the Gift of Golf

## About the Duramed FUTURES Tour

The Duramed FUTURES Tour is a highly competitive women's professional golf tour whose mission is to prepare the very best young professional women golfers in the world for a career on the LPGA Tour. Each year, over 300 top players from more than 30 countries compete over an 17 tournament season in order to win one of the coveted LPGA exempt cards. Amazingly the 18-hole scoring average of our Top 100 players over the course of an entire season is only one stroke away from that of the LPGA Tour's Top 100. This Pro-Am gives you the opportunity to play with the world's best as they stand on the doorstep of becoming stars on the LPGA Tour!

## It's A Scramble! Fun For Everyone!

It doesn't matter how good a golfer you are - that's why you're paired with a professional. The format is a four-person scramble - three amateurs + one professional - playing for a good lie. If you win, congratulations! But even if you don't, you will have had a great day with friends or colleagues, and one extraordinary athlete. All tournament proceeds go to *Chip In For A Cure* is a well-established locally based charity. Chip In For A Cure donates their fund raising proceeds to breast cancer programs and research at Hartford Hospital and St. Francis Hospital and Medical Center. The money raised here, stays here.

## Look at What Your Pro-Am Package Includes

- Deluxe assortment of high quality golf gifts
- There will be an awards ceremony for each ProAm
- Prizes will be paid to 1st, 2nd, 3rd Gross and Net
- An expansive portfolio of gifts, gift certificates, trophies and golf bags from the entire roster of the Tour's Official Sponsors, including Cutter & Buck, Sun Mountain, YES! Golf, and many more.
- (2) 3-Day VIP Weekend Hospitality Passes (\$100 value)
- All ProAm meals and beverages

- Pro-Am meal program differs for Wednesday vs. Thursday

### Wednesday Pro-Am

Arrivals: 11:00 a.m.  
 Player registration: 11:00 a.m.-12:30 p.m.  
 Practice range: 11:00 a.m.-12:30 p.m.  
 Luncheon buffet: 11:00 a.m.-12:30 p.m.  
 Tee-off: 12:30 p.m.  
 Awards dinner buffet: 5:30 p.m.

### Thursday Pro-Am

Arrivals: 7:30 a.m.  
 Player registration: 7:30-8:15 a.m.  
 Practice range: 7:30-8:30 a.m.  
 Tee-off: 8:30 a.m.  
 Awards luncheon: 1:30 p.m.

### Cost

\$833 per person- \$2,500 per threesome  
 Team of two: \$1,800.  
 Single: \$900 all inclusive. Special auctions, etc. are optional extras

## About the Wintonbury Hills Golf Course

"Top 25 New Course in the US" - Golfweek Magazine

Located in Bloomfield, Connecticut, just 15 minutes from Hartford and easily accessible to I-91 and Bradley International Airport, Wintonbury Hills is a beautifully-conditioned course in a peaceful and relaxing setting. Wintonbury Hills' 6,711 yard, Par 70 layout is Pete Dye's first championship design in New England. It offers a combination of open links-style and traditional tree-lined holes to provide golfers a challenging and enjoyable round of golf. With generous rolling fairways to help navigate the 125 bunkers, and breath-taking views of the Tunxis Reservoir, Wintonbury Hills should be on everyone's "must play" list.

*The 2009 Pro-Ams feature smaller groups for faster play!*

For more information go to: [ingnewenglandgolfclassic.com](http://ingnewenglandgolfclassic.com)

## Please return this form by 7/9/09 to:

The ING New England Golf Classic  
 190 Trumbull Street - Suite 202  
 Hartford CT, 06103  
 For info. call Maura Majeski: 860-930-0016

### Your Choices:

- ProAm 1 - Wednesday - July, 15 - 12:30 p.m. shotgun
- ProAm 2 - Thursday - July 16 - 8:30 a.m. shotgun
- First come, first served re. Wed. vs. Thurs.
- Please reserve a team of three (\$2,500)
- Please reserve a team of two\* (\$1,800)
- Please reserve a single player spot\* (\$900)

\* If you reserve less than a full team slot, the tournament will create a full team for you.

### Your Team:

Name \_\_\_\_\_ Handicap \_\_\_\_\_

Player #1\* \_\_\_\_\_

Player #2 \_\_\_\_\_

Player #3 \_\_\_\_\_

\* Player #1 is team captain and primary contact person

## Your Contact Information:

Name \_\_\_\_\_

Street Address \_\_\_\_\_

City \_\_\_\_\_ State \_\_\_\_\_ Zip: \_\_\_\_\_

Phone: \_\_\_\_\_ Email: \_\_\_\_\_

## Payment Information:

Payment by check: Please make check payable to:  
 The ING New England Golf Classic

**Note: You can register online at [ingnewenglandgolfclassic.com](http://ingnewenglandgolfclassic.com)**

## Payment by credit card:

Name on card: \_\_\_\_\_

Card type:  MC  Visa Expir. date: \_\_\_\_\_

Card Number: \_\_\_\_\_

Security code (CVV number): \_\_\_\_\_

**All registrations must be received  
 with payment by Thursday July 9, 2009**